



Here is your package for

Final Test

6 Nights/7 Days

Tour Code : DMC/BI/877

Overview



Travel Date:

2025: 10 Apr | 11 Apr | 12 Apr |



Destinations

Dubai , Abu Dhabi



Meals

Breakfast 6 , Dinner 5 , Lunch 6 , Picnic Lunch 1

Highlights

- ✓ Dubai is a city and emirate in the United Arab Emirates known for luxury shopping, ultramodern architecture and a lively nightlife scene.

Burj Khalifa, an 830m-tall tower, dominates the skyscraper-filled skyline. At its foot lies Dubai Fountain, with jets and lights choreographed to music.

n artificial islands just offshore is Atlantis, The Palm, a resort with water and marine-animal parks.

Tour Gallery



Itinerary

Day
1

dubai

Dubai is a city and emirate in the United Arab Emirates known for luxury shopping, ultramodern architecture and a lively nightlife scene. Burj Khalifa, an 830m-tall tower, dominates the skyscraper-filled skyline. At its foot lies Dubai Fountain, with jets and lights choreographed to music. On artificial islands just offshore is Atlantis, The Palm, a resort with water and marine-animal parks.

Breakfast,Lunch,Dinner

Day
2

dubai - abu dhabi

Dubai is a city and emirate in the United Arab Emirates known for luxury shopping, ultramodern architecture and a lively nightlife scene. Burj Khalifa, an 830m-tall tower, dominates the skyscraper-filled skyline. At its foot lies Dubai Fountain, with jets and lights choreographed to music. On artificial islands just offshore is Atlantis, The Palm, a resort with water and marine-animal parks.

Breakfast + Lunch + Dinner

Day
3

dubai - abu dhabi

Dubai is a city and emirate in the United Arab Emirates known for luxury shopping, ultramodern architecture and a lively nightlife scene. Burj Khalifa, an 830m-tall tower, dominates the skyscraper-filled skyline. At its foot lies Dubai Fountain, with jets and lights choreographed to music. On artificial islands just offshore is Atlantis, The Palm, a resort with water and marine-animal parks.

Breakfast Test

Day
4

abu dhabi - dubai - abu dhabi

Dubai is a city and emirate in the United Arab Emirates known for luxury shopping, ultramodern architecture and a lively nightlife scene. Burj Khalifa, an 830m-tall tower, dominates the skyscraper-filled skyline. At its foot lies Dubai Fountain, with jets and lights choreographed to music. On artificial islands just offshore is Atlantis, The Palm, a resort with water and marine-animal parks.

Breakfast + Lunch + Dinner

Day
5

dubai - abu dhabi

Dubai is a city and emirate in the United Arab Emirates known for luxury shopping, ultramodern architecture and a lively nightlife scene. Burj Khalifa, an 830m-tall tower, dominates the skyscraper-filled skyline. At its foot lies Dubai Fountain, with jets and lights choreographed to music. On artificial islands just offshore is Atlantis, The Palm, a resort with water and marine-animal parks.

Packed Lunch

Day
6

dubai - abu dhabi

Dubai is a city and emirate in the United Arab Emirates known for luxury shopping, ultramodern architecture and a lively nightlife scene. Burj Khalifa, an 830m-tall tower, dominates the skyscraper-filled skyline. At its foot lies Dubai Fountain, with jets and lights choreographed to music. On artificial islands just offshore is Atlantis, The Palm, a resort with water and marine-animal parks.

Breakfast + Lunch + Dinner

Day
7

Dubai is a city and emirate in the United Arab Emirates known for luxury shopping, ultramodern architecture and a lively nightlife scene. Burj Khalifa, an 830m-tall tower, dominates the skyscraper-filled skyline. At its foot lies Dubai Fountain, with jets and lights choreographed to music. On artificial islands just offshore is Atlantis, The Palm, a resort with water and marine-animal parks.

Breakfast + Lunch + Dinner

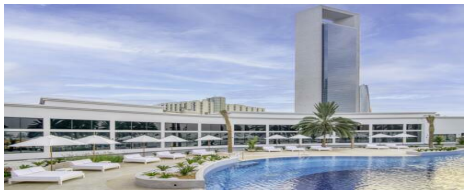
Hotels

Dubai - 3



Atlantis The Palm/Donatello Hotels & Resorts
or Similar

Abu Dhabi - 3



Grand Hyatt Abu Dhabi Hotel & Residences Emirates
Pearl/Radisson Blu Hotel & Resort, Abu Dhabi
Corniche
or Similar

Trip Cost

Net & non-commissionable rates per person

Departures: 11/04/2025, 10/04/2025

Ajman

Currency	Single	Double	TPL	Child sharing with Bed (3-12)	Child sharing without Bed (3-12)
AED	100.00	100.00	100.00	100.00	100.00

Payment Schedule & Policy

Payment Schedule

- 100% payment 7 Days before arrival
- 60% Payment 30 Days before arrival
- 80% Payment 15 days before arrival

Cancellation Policy

- 50% Cancellation Fees if Cancelled 16-30 days before arrival
- 25% Cancellation Fees if Cancelled 31-45 days before arrival
- if cancellation 3- 7 days will charge 50% amount

Pick up Drop Off / Optional Excursion / Travel Mode

Pick Up / Drop Off Points

Pick Up / Drop Off	Location	Pick Up Time	Drop Off Time	Pick Up Charges	Drop Off Charges	Return Charges
Pick Up/ Drop Off/ Return	SeaWoods Thane	12:29	14:39	2312.00	21.00	232.00
Pick Up/ Drop Off/ Return	New Location	32	234	235.00	5.00	54.00
Pick Up/ Drop Off/ Return	Brazil	12:11	01:12	24.00	23.00	34.00

Travel Mode

From	Via	To	By
mumbai	mumbai	Dubai	flight
Dubai		Abu Dhabi	bus

Optional Excursion

Sectors	Sight Seeing	Adult	Infant	Child	Teenager	Senior Adult	Composite	Currency
Dubai	mosque - Test	10.00 Age (13.00-90.00)	10.00 Age (NA-NA)	10.00 Age (2.00-12.00)	0.00 Age (NA-NA)	0.00 Age (NA-NA)	0.00	AED

Sight Seeing

Sector	SightSeeing(Products)
Abu Dhabi	City Tour
Dubai	Desert Safari Private Tour

Inclusions / Exclusions

Inclusions

- Meet and Greet at arrival [For City Of Origin **Ajman**]
- All park entrance fees to include government taxes. [For City Of Origin **Ajman**]
- Full board accommodation, meal plan as mentioned in itinerary. [For City Of Origin **Ajman**]

Exclusions

- visa charges are not included [For City Of Origin **Ajman**]
- Entrance fees & guide charges other than mentioned in the inclusions [For City Of Origin **Ajman**]
- International air ticket, Domestic ticket if any, Airport taxes & Visa charges [For City Of Origin **Ajman**]
- International airfares, airport taxes [For City Of Origin **Ajman**]
- Cost of foreign exchange for personal use. [For City Of Origin **Ajman**]

Important Notes

- Desert safari is done on 4x4 vehicle, 1 car will accommodate 6 to 7 passengers.
- Burj Khalifa tickets and slot timings will depend on availability we will not be responsible for late slots. If slot timings will be late passenger have to pay additional cost for transfers or need to book upgraded tickets at additional cost.
- If your tours and transfers are based on seat in coach basis (SIC). Seat in coach transfers departs only at fixed time and stops at different hotels Enroute where other passengers may be picked /dropped off.

Terms And Condition

- Copy of PAN Card is required if Payment is made by cash and is more than Rs.50,000/- per person.
- Booking Confirmation Amount After getting the availability from the hotel, Transport etc you will be informed via email or Phone
- Visa is at the sole discretion of the Embassy and the fee is nonrefundable as per the strict guidelines of the Embassy. If you are processing visa through Trav-Mall Technologies - we do not take guarantee for the VISA approval.

1. Europe is a continent located entirely in the Northern Hemisphere and mostly in the Eastern Hemisphere. It is bordered by the Arctic Ocean to the north, the Atlantic Ocean to the west,

Europe is a continent located entirely in the Northern Hemisphere and mostly in the Eastern Hemisphere. It is bordered by the Arctic Ocean to the north, the Atlantic Ocean to the west,

2. Europe is a continent located entirely in the Northern Hemisphere and mostly in the Eastern Hemisphere. It is bordered by the Arctic Ocean to the north, the Atlantic Ocean to the west,

2 . Europe is a continent located entirely in the Northern Hemisphere and mostly in the Eastern Hemisphere. It is bordered by the Arctic Ocean to the north, the Atlantic Ocean to the west,

FAQ

FAQ Question:

A:

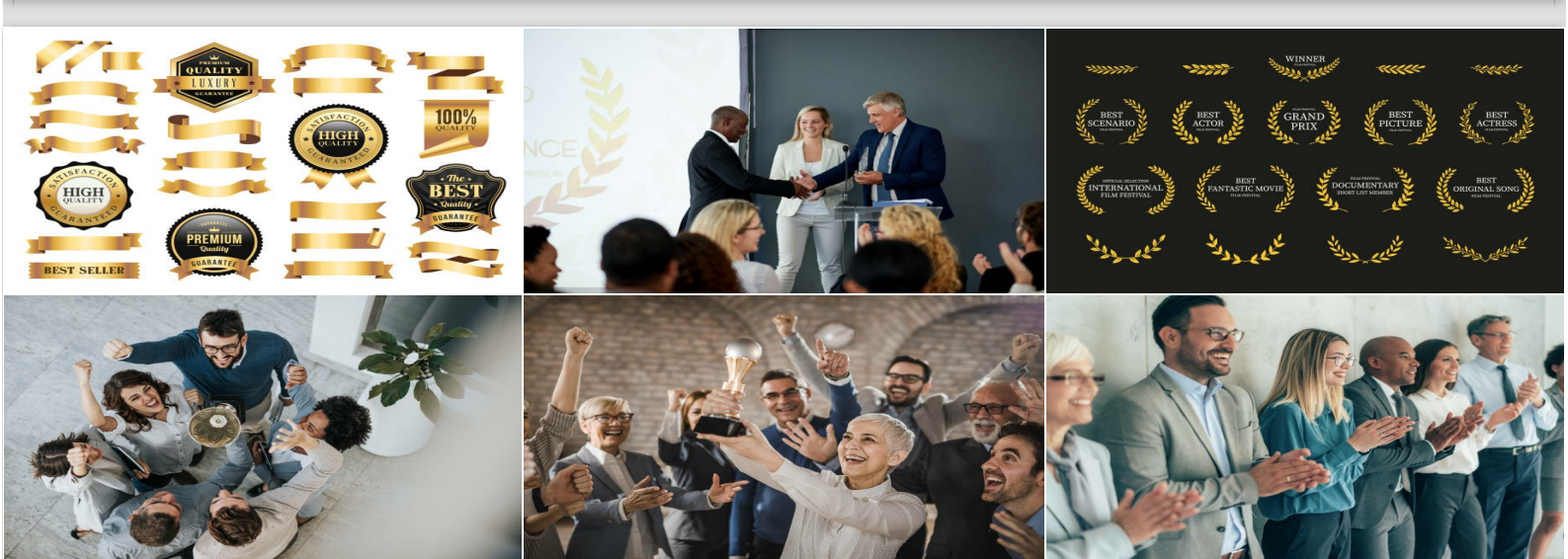
1.Europe is a continent located entirely in the Northern Hemisphere and mostly in the Eastern Hemisphere. It is bordered by the Arctic Ocean to the north, the Atlantic Ocean to the west,

2.Europe is a continent located entirely in the Northern Hemisphere and mostly in the Eastern Hemisphere. It is bordered by the Arctic Ocean to the north, the Atlantic Ocean to the west,

Dubai is a city and emirate in the United A

A:

Europe is a continent located entirely in the Northern Hemisphere and mostly in the Eastern Hemisphere. It is bordered by the Arctic Ocean to the north, the Atlantic Ocean to the west,



DMC B2C 1



DMC B2C 2



DMC B2C 3



Head Office

Dubai, Centre IT Park ,Shop No 17, MR,NEAR DUBAI
STREET,NO 45, UAE



Mumbai

Vidyavihar Mumbai Maharashtra

When you're ready to begin planning, Connect with us.

 254-9967491112

 dmccompany@puratech.com

We are on



DMC

